

RECEIVED: 05/06/2024

---

## **ATTACHMENT 2.0**

### **DESCRIPTION OF DEVELOPMENT CHAPTER**

---

RECEIVED: 05/06/2024

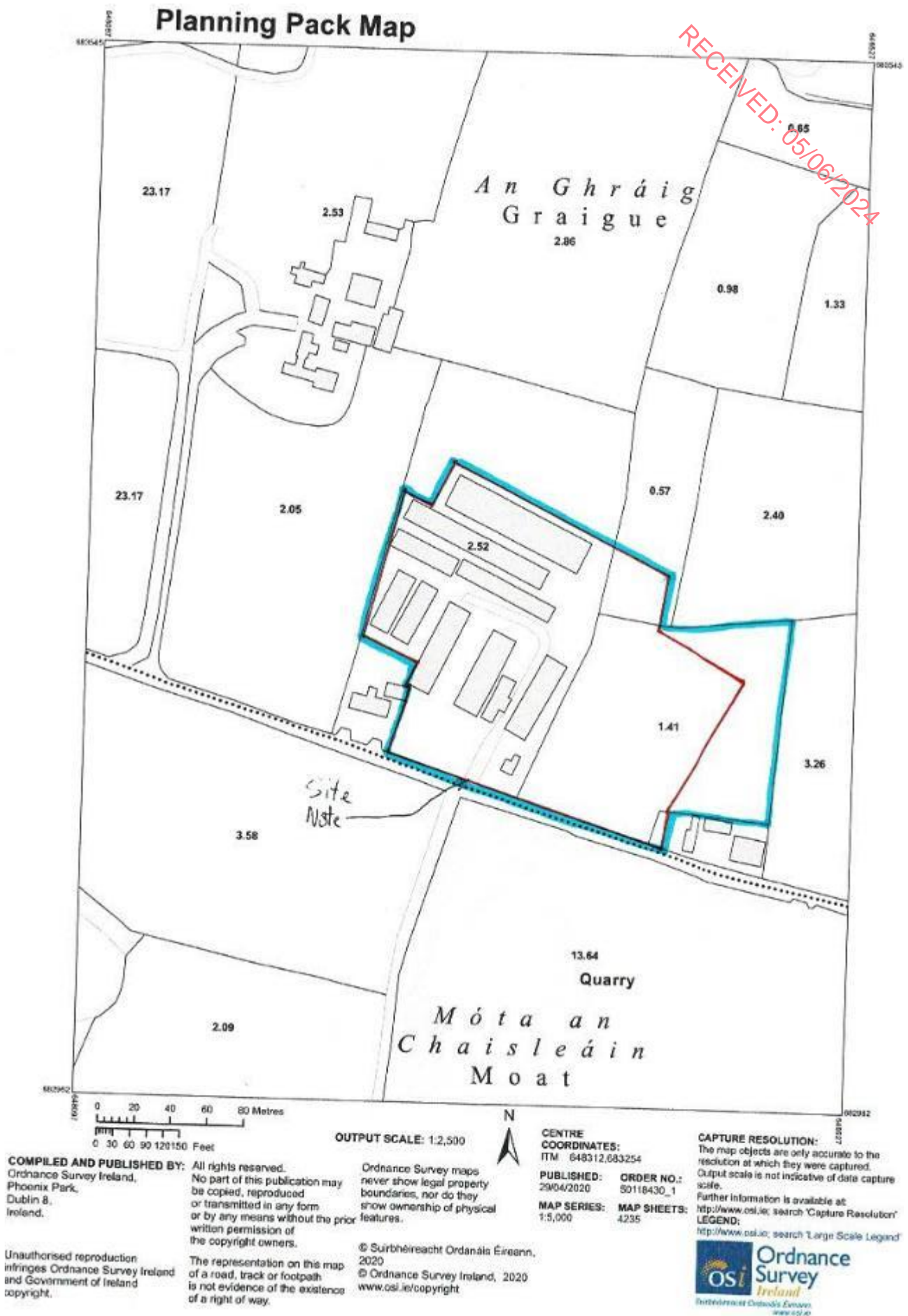
---

## **ATTACHMENT 2.1**

### **SITE LOCATION DRAWING**

---

**ENVIRONMENTAL IMPACT ASSESSMENT REPORT**  
**TULLEKA TRADING UNLIMITED, GRAIGUE, BALLINAKILL, CO. LAOIS**



RECEIVED: 05/06/2024

---

## **ATTACHMNET 2.2**

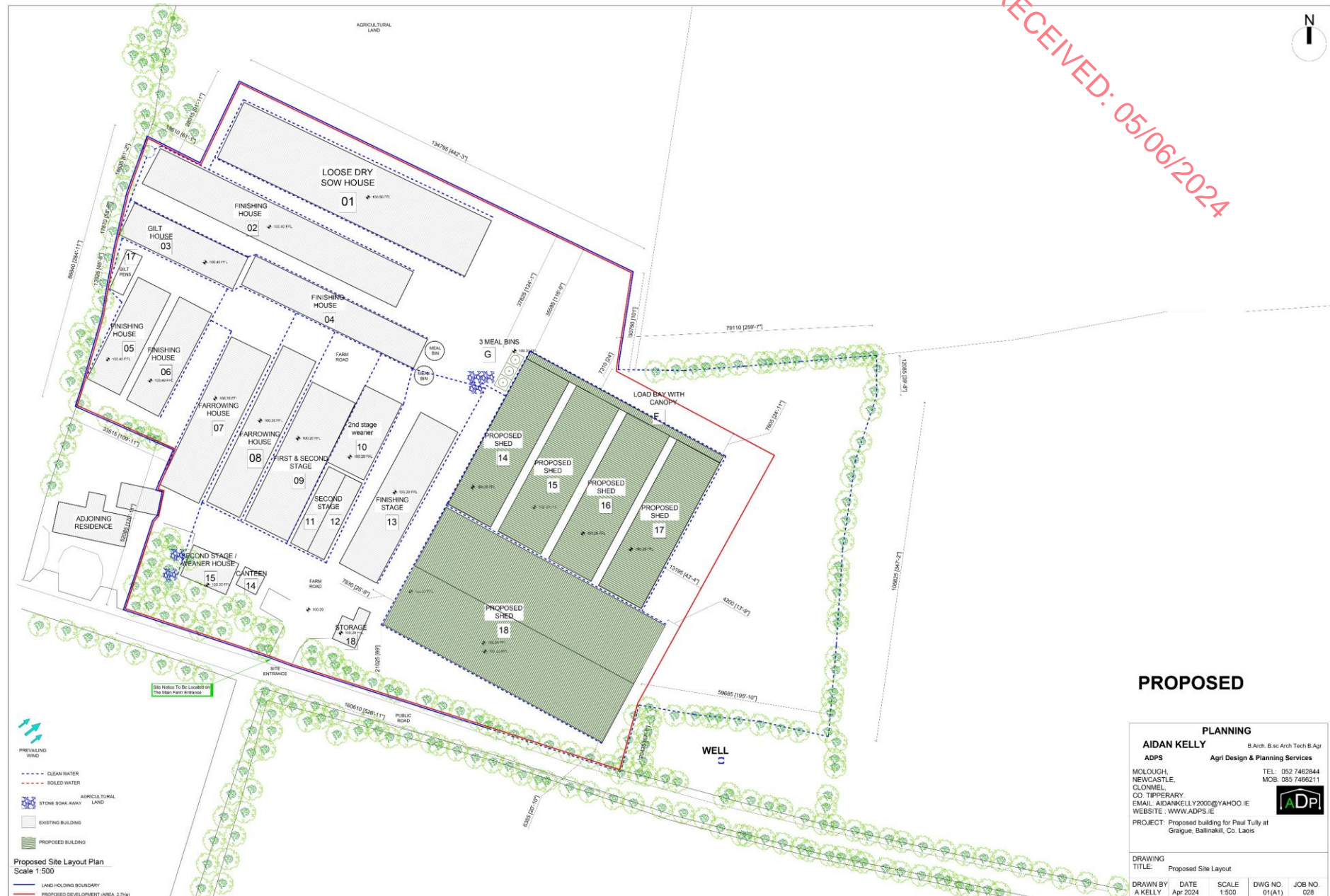
### **SITE LAYOUT PLAN**

---

# ENVIRONMENTAL IMPACT ASSESSMENT REPORT

## TULLEKA TRADING UNLIMITED, GRAIGUE, BALLINAKILL, CO. LAOIS

RECEIVED: 05/06/2024



RECEIVED: 05/06/2024

---

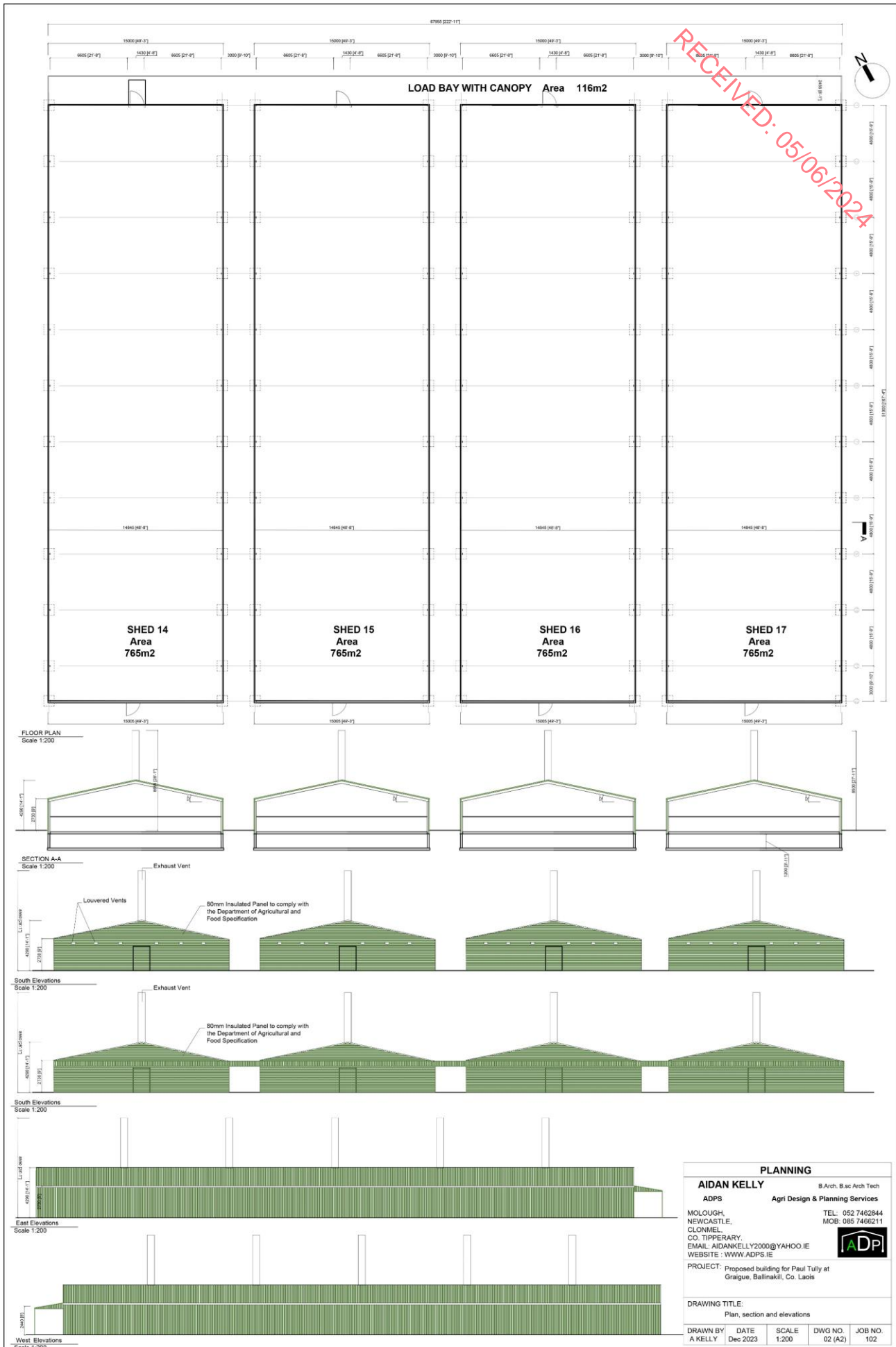
## **ATTACHMENT 2.3**

### **PROPOSED BUILDING ELEVATIONS AND PLANS**

---

# ENVIRONMENTAL IMPACT ASSESSMENT REPORT

## TULLEKA TRADING UNLIMITED, GRAIGUE, BALLINAKILL, CO. LAOIS





# ENVIRONMENTAL IMPACT ASSESSMENT REPORT

## TULLEKA TRADING UNLIMITED, GRAIGUE, BALLINAKILL, CO. LAOIS

